



Changshu Tongrun Electronic

glove box&dry cabinet&customized vacuum system

About TORUN

Torun was founded in 2006. We work to design and produce Glove Box & Dry Cabinet & Customized Vacuum System. We provide one-stop service and professional solutions for the pharmaceutical, chemical, laser welding, OLED, 3D printing and nuclear industries.

We have ever succeeded in more than 10000 custom cases (Such as sampling device、filling system、packing isolation system、laser-welding system and 3D printing system) around the world.

So far, our products have been exported to 28 countries, including but not limited to USA, Germany, Russia, Indian, Japan, Malaysia, Singapore and Korea.

Website: <https://www.powertongrun.com>

Online shop: <https://powertongrun.en.alibaba.com>

OUR FACTORY



Sheet
metal

Painting

Assembly

Testing

Workshop





Changshu Tongrun Electronic
glove box&dry cabinet&customized vacuum system

Stainless steel vacuum glove box

—— VGB series



What is stainless steel glove box?

Stainless steel glove box is the laboratory equipment that can keep a highly purified anhydrous and anaerobic environment, through multiple vacuum extraction or filling high purity sluggishness gas to complete replacement.

Differences of VGB series

VGB-A: Main chamber(vacuum) Antechamber(×)

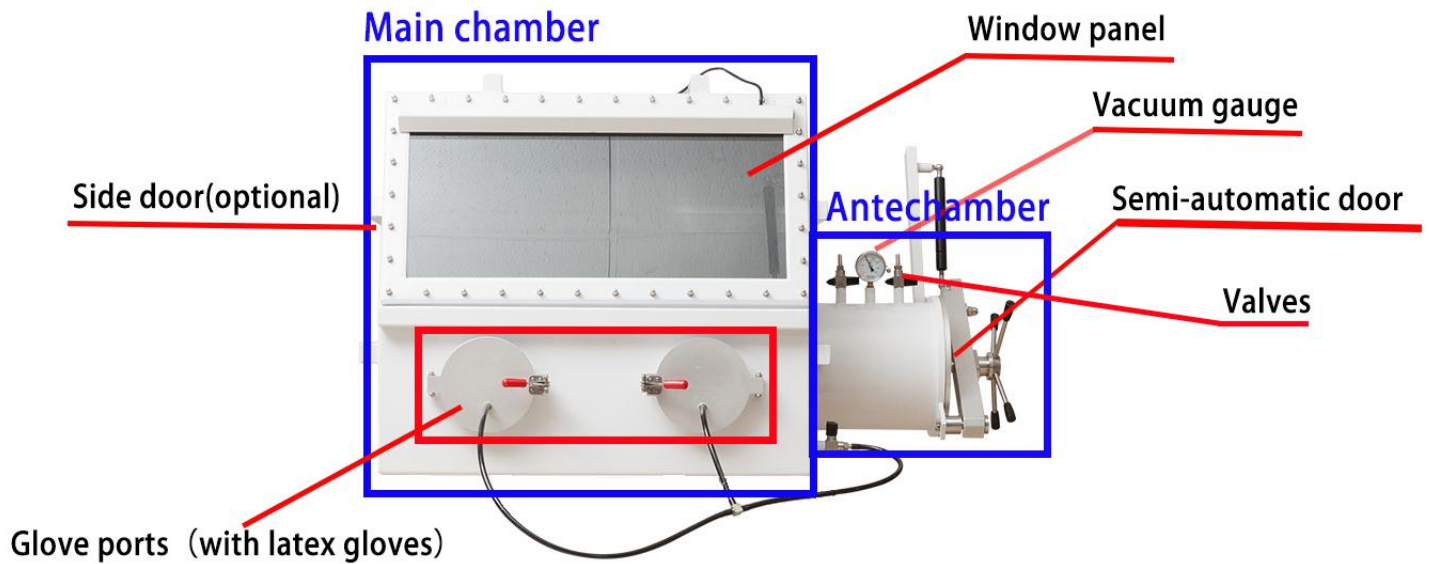
VGB-B: Main chamber (**not vacuum**) Antechamber (vacuum)

VGB-C: Main chamber (vacuum) Antechamber (vacuum)

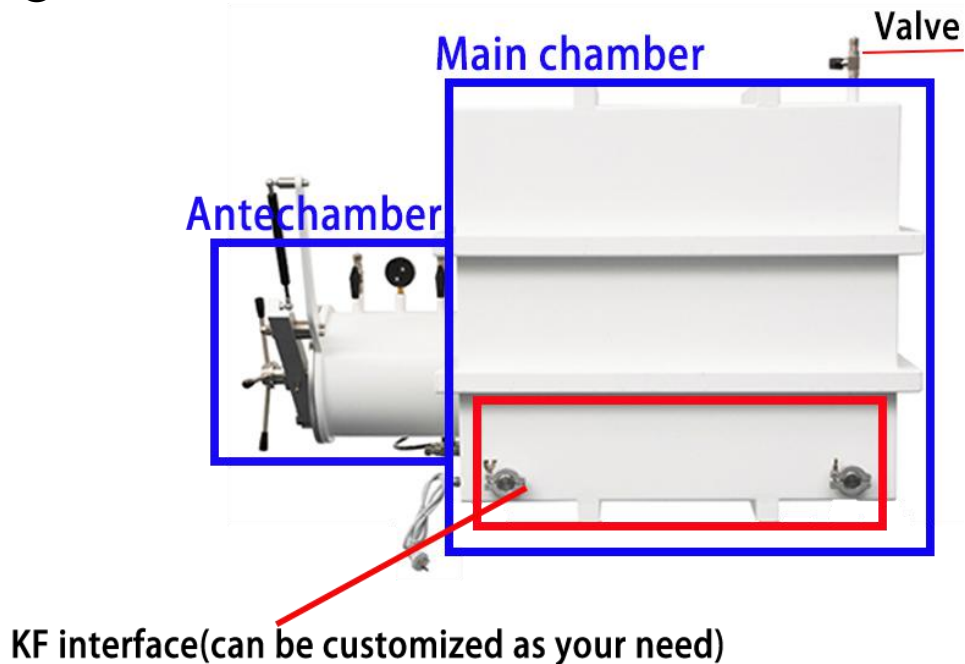
VGB-M: Above A/B/C type equipped with **side door**

Diagram of the glove box

①Front



②Back



Attention: the movable stand is optional.



Changshu Tongrun Electronic

glove box&dry cabinet&customized vacuum system

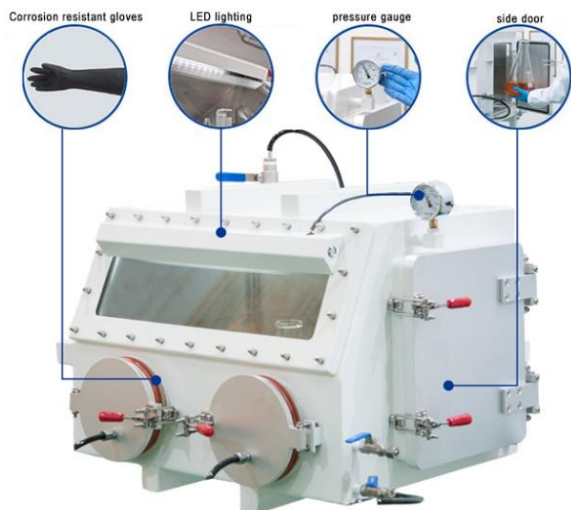
Main Characters:

Main Chamber	stainless steel SUS304, thickness 3mm . Internal surface: stainless steel wire drawing processing. Outside surface: spray lacquer, white.
Window panel	10mm organic glass, wide angle without any dead space.
Valves	In and out of the balloon made up of stainless steel SUS304 , the valve inside and outside with filters can inlet water and air, instruments (such as spin coater) can put in the main chamber then pump to vacuum.
Lighting system	White light without ultraviolet ray, set in front of each glass
Power supply	Perforated power socket equipped in the main chamber.
Glove	Glove box use the industrial grade corrosion resistant latex gloves, the mouth of the glove is fixed with a sealing ring.
Reserved Interface	Reserved KF interface, glove box can upgrade at any time.



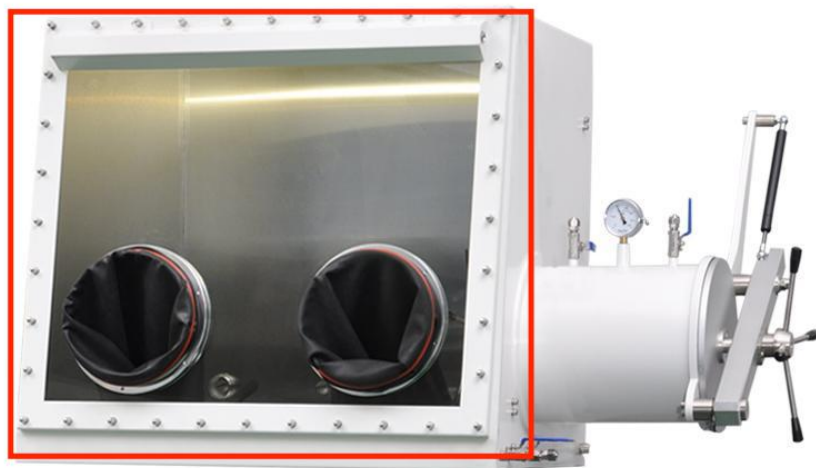
Model size

① VGB-A



Model	Main chamber size	Thickness	Vacuum degree	Side door (optional)	Antechamber
VGB-1A	600*450*420mm	3mm	-0.1MPa	H300*D260mm	/
VGB-3A	780*650*700mm	3mm	-0.1MPa	H350*D300mm	
VGB-4A	1120*740*900mm	3mm	-0.1MPa	H350*D450mm	

② VGB-B



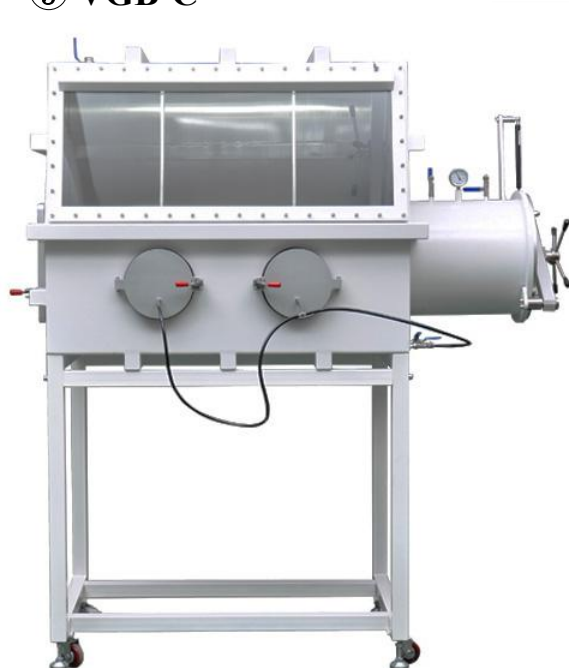


Changshu Tongrun Electronic

glove box&dry cabinet&customized vacuum system

Model	Main chamber size	Thickness	Vacuum degree	Side door (optional)	Antechamber size	Vacuum degree
VGB-1B	600*450*420mm	3mm	+1000PA	H300*D260mm	Φ210*260mm	-0.1MPa
VGB-3B	780*650*700mm	3mm	+1000PA	H350*D300mm	Φ240*260mm	-0.1MPa
VGB-4B	1120*740*900mm	3mm	+1000PA	H350*D450mm	Φ370*400mm	-0.1MPa

③ VGB-C



Model	Main chamber size	Thickness	Vacuum degree	Side door (optional)	Antechamber size	Vacuum degree
VGB-1C	600*450*420mm	3mm	-0.1MPa	H300*D260mm	Φ210*260mm	-0.1MPa
VGB-3C	780*650*700mm	3mm	-0.1MPa	H350*D300mm	Φ240*260mm	-0.1MPa
VGB-4C	1120*740*900mm	3mm	-0.1MPa	H350*D450mm	Φ370*400mm	-0.1MPa



Changshu Tongrun Electronic

glove box&dry cabinet&customized vacuum system

Optional configuration

Humidity Automatic Controller	Automatic control of humidity and moisture in the glove box, get out of the humidity blind zone.
Pressure Control System	Pressure constant in the box , be well used in dealing with the leak of harmful powder.
Purification System	The water and oxygen numerical usually stay about 200PPM after picking up the suction and inactive gas. With the purification system , the water and oxygen numerical can stay < 1PPM.
Oxygen monitoring unit	Monitor real-time inner oxygen data(0-1000PPM)
Moisture monitoring unit	Monitor real-time inner moisture data(0-1000PPM)
Solvent removal system	Adsorb the volatile organic compounds
Open loop / Closed-loop HEPA Filters	Filter small particulate pollutants
Vacuum pump	Pumping vacuum into the glove chamber