



Foshan Weistai Electric Co.,Ltd.



Weistai

About us

Foshan Weistai Electric Co.,Ltd. was established in 1998. We are a leading manufacturer of LED lights. Our products enjoy high reputation in Europe, Asia, Africa, Oceania etc. With independent R&D department and advanced manufacturing technology, we have strong scientific strength to develop the high-tech products with high to meet the unique needs of customers. We are looking forward to cooperating with domestic and abroad friends to creative mutual benefit!

USB rechargeable light series



Model: WST-1813-CD7

Applications: cabinet, wardrobe, cupboard, closet, desk, hallway, stick-on anywhere you want

Material: Ultra-thin aluminum

Size: $\phi 80 \times 16\text{mm}$ (Dia. \times H)

Features:

Built-in lithium battery, USB rechargeable

PIR sensor, Magnet adsorption, easy installation

Ultra-thin aluminum housing, high quality



Model: WST-1813-CD8

Applications: cabinet, wardrobe, cupboard, closet, desk, hallway, stick-on anywhere you want

Material: ultra-thin aluminum

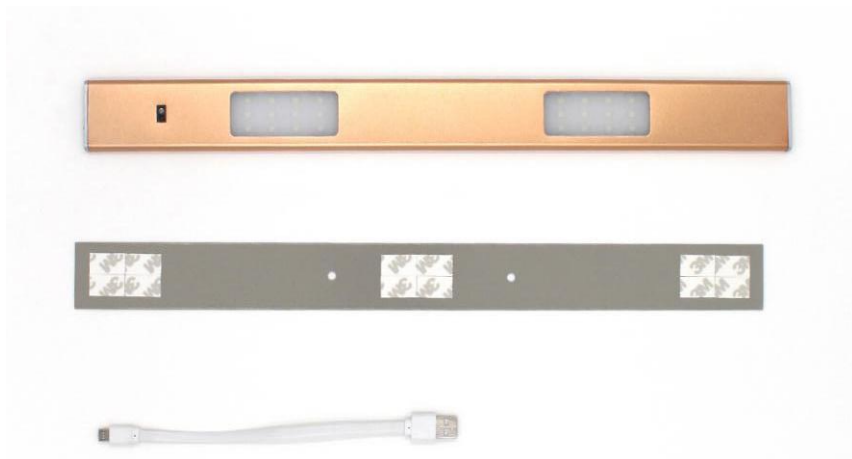
Size: 80x80x19mm (LxWxH)

Features:

Built-in lithium battery, USB rechargeable

PIR sensor, Magnet adsorption, easy installation

Ultra-thin aluminum, high quality



Model:

WST-1816-CD6-GB(PIR sensor)

WST-1816-CD6-SS(Hand sweep sensor)

WST-1816-CD6-JG(Approach sensor)

Material: Ultra-thin aluminum

Size: 400×40×8mm Length can be customized.

Features:

Built-in lithium battery, USB rechargeable

Magnet adsorption, easy installation

Ultra-thin aluminum, high quality





Model: WST-1809-4-GB

Applications: cabinet, wardrobe, cupboard, closet, desk, bathroom cabinet, stick-on anywhere you want

Material: Ultra-thin aluminum

Size: Customized length $\times 42 \times 18\text{mm}$ (L \times W \times H)

Features:

Built-in lithium battery, USB rechargeable

PIR sensor, Magnet adsorption, easy installation

Ultra-thin aluminum, high quality

Unique oblique light angle, wide coverage



Model: WST-1809-3-GB

Applications: Wardrobe

Material: Double layer high-strength aluminum

Size: Customized length \times Dia.28mm(L \times Dia.)

Features:

Built-in lithium battery, USB rechargeable

PIR sensor

Maximum load:50kg.



■WST-TD-009



■WST-TD-004B



■WST-TD-004

Material: ABS and PS

Size: 116×81×410mm/155×150×530mm

Start mode: Touch control

Features: Built-in lithium battery, USB rechargeable. Bendable arms allow you to adjust the light angle.

Battery-powered cabinet light series



Model: WST-1813-1

Applications: Cabinet, wardrobe, shoes case, desk, hallway, drawer, bedside, bathroom cabinet, door, etc.

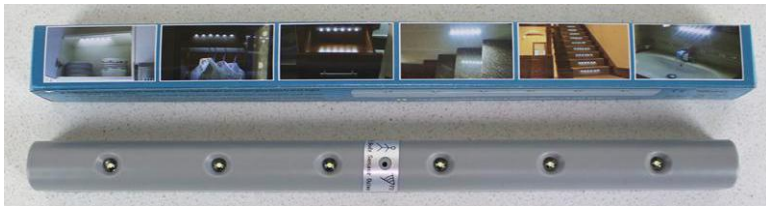
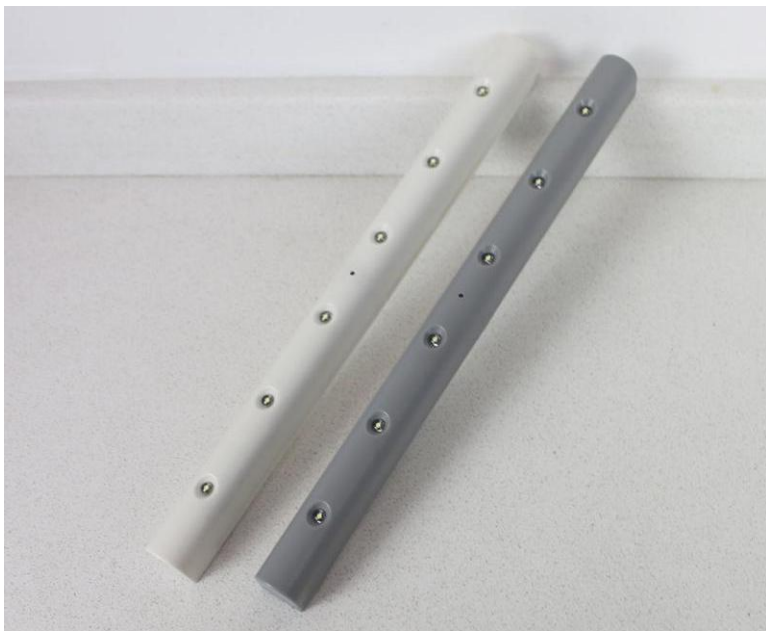
Material: ABS

Size: $155 \times 15 \times 20$ mm(L \times W \times H)

Power supply: 3 AAA batteries

Features:

Vibration Sensor. Light on when you open the drawer, light off after 15-20sec.



Model:

WST-1813-5B(PIR sensor)

WST-1813-5A(Vibration sensor)

WST-1813-5YK(Remote control)

Material: ABS

Size: 275×20×23mm (L×W×H)

Power supply: 5pcs AAA batteries

Features:

Sticker installation,suitable for cabinet and stairs.



Model:

WST-1813-2B(PIR sensor)

WST-1813-2A(Vibration sensor)

Applications: Cabinet, wardrobe, shoes case, bedside etc.

Material: ABS

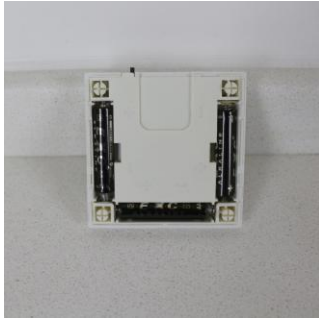
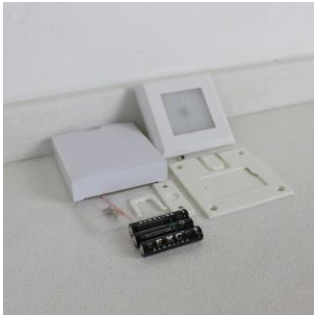
Size: $\phi 100 \times 20\text{mm}$

Power supply: 5pcs AAA batteries

Features:

Mini, energy-saving and portable.

Can be stuck on anywhere you want.



Model:

WST-1813-4B(PIR sensor)

WST-1813-4A(Vibration sensor)

WST-1813-4YK(Remote control)

Material: ABS

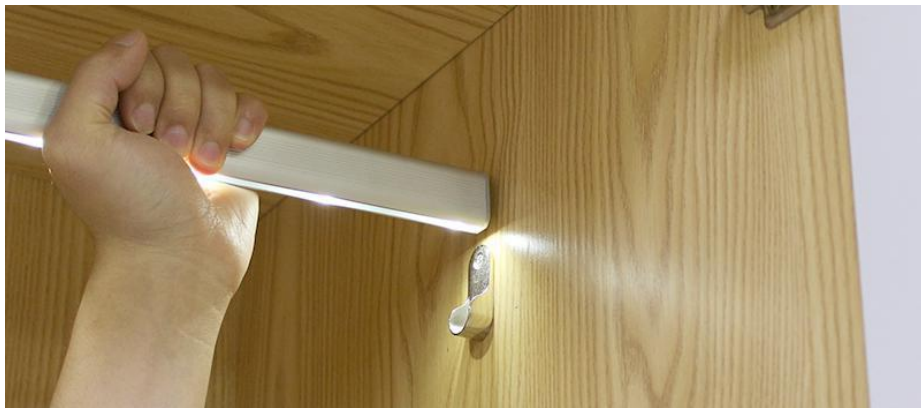
Size: 76×76×18mm (L×W×H)

Power supply: 3pcs AAA batteries

Features:

Mini,energy-saving and portable.

Can be stuck on anywhere you want.



Model:

WST-1809-2B(PIR sensor)

WST-1809-2A(Vibration sensor)

Applications:Wardrobe

Material: High-strength aluminum

Size: Length \times 30 \times 15mm(Length can be customized.)

Power supply: 5pcs AAA batteries

Features:

Maximum load:20kg



Model: WST-1816-6B

Applications: Cabinet, wardrobe, shoes case, desk, hallway, drawer, bedside, bathroom cabinet, door

Material: high strength aluminum

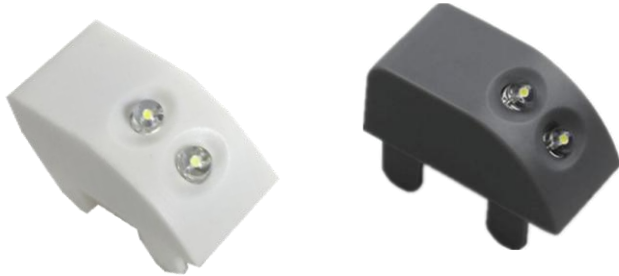
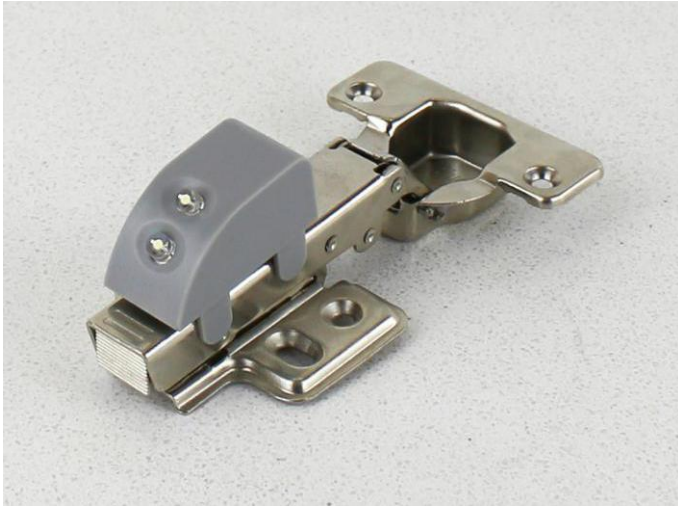
Size: 500×30×17mm (Length can be customized.)

Power supply: 5pcs AAA batteries

Features:

PIR Sensor

Magnet adsorption, free installation.



Model: WST-1813-6

Applications: Cabinet, wardrobe, shoes case, door, any hinge

Material: ABS

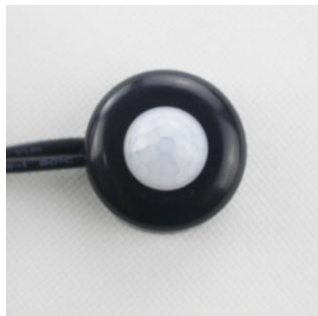
Size: 40 × 19 × 28mm(L × W × H)

Power supply: 3pcs 1.5V button batteries

Features:

Vibration Sensor. Light on when you open the drawer, light off after 15-20sec.

Cable light series



Model: WST-1800-2PIR

Applications: Bedside, stairs, handrail, door frame

Power: 12W

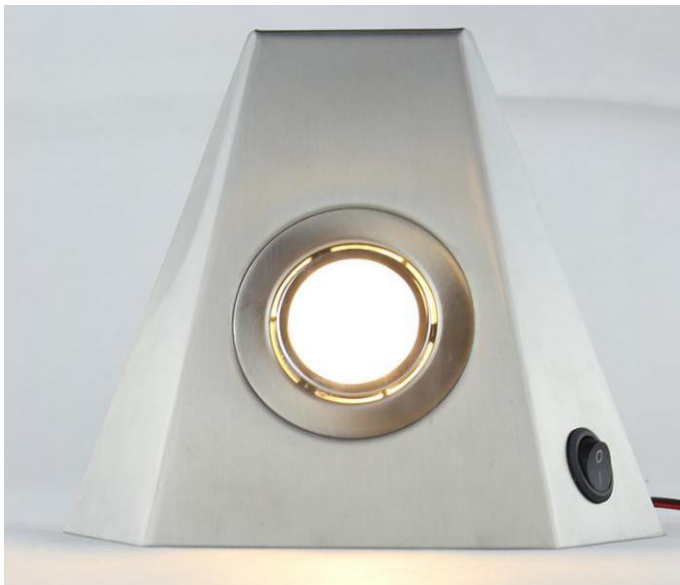
The light source type: LED

The whole lamp life: 25000h

Start mode: human body induction

Features: The light will be on 5~120 seconds after detecting human activities(adjustable).

Human body induction distance and the light sensitivity can be adjusted.



Model:WST-1812-6

Applications: Cabinet, wine cabinet

Material: Stainless steel

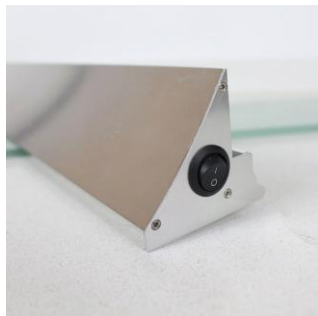
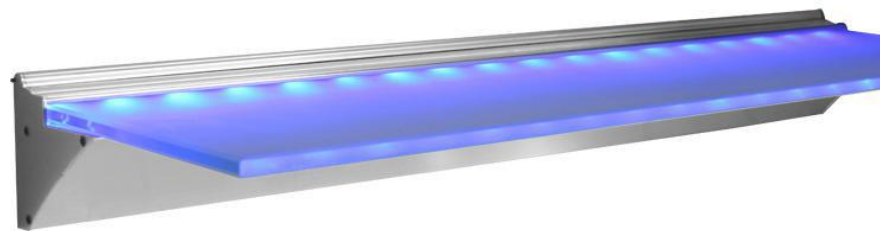
Size: 160×60×220mm(L×W×H)

Input Voltage: 12V/110V/220V

Power: 3W

Start mode: Switch control

Features: High quality 304 stainless steel shell,fashion look,energy-saving.



Model: WST-1816-3

Applications: Cabinet, wardrobe, shoes cabinet, desk, wine cabinet, showroom, shop, etc.

Material: Aluminum and glass

Size: 600/900/1200×175×41mm(L×W×H) Glass:8mm

Input Voltage: 110V/220V

Power: 2W/M

The light source type: LED

Start mode: Switch control

Features: RGB, multi-color, soft brightness.



Model: WST-1816-1

Applications: Cabinet, wardrobe, shoes cabinet, desk, wine cabinet, etc.

Material: Aluminum and double layer glass

Size: $L \times 180/330 \times 50\text{mm}$ ($L \times W \times H$). Length can be customized.

Power: 4W/M

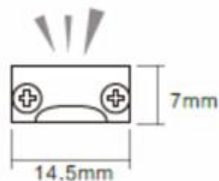
The whole lamp life: 25000h

Start mode: Switch control

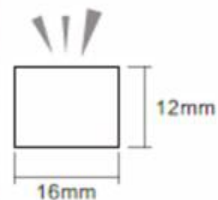
Features: Double-sided frosted glass

Strip light series

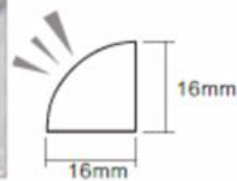
Aluminum rigid strip light series



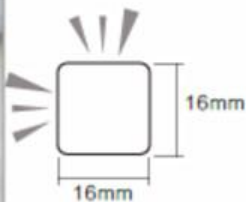
● WST-1364-B



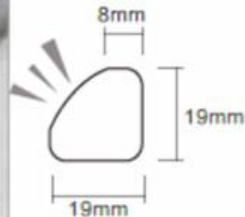
● WST-1364-C-05



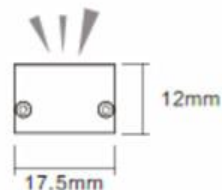
● WST-1364-G2



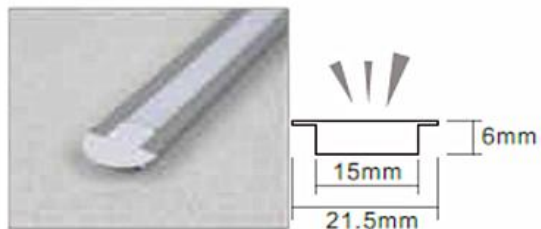
● WST-1364-G1



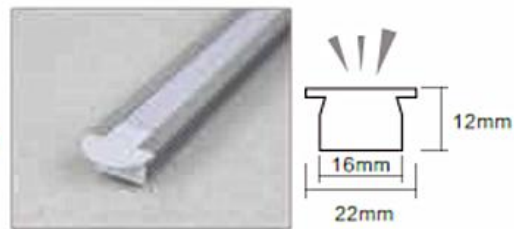
● WST-1364-D1



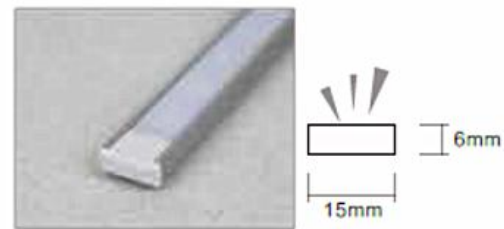
● WST-1364-C



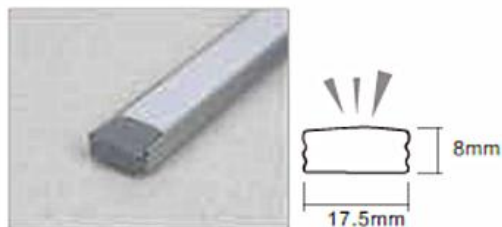
● WST-1364-H-01



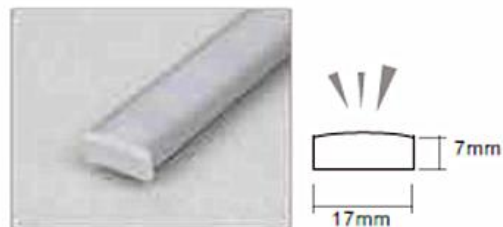
● WST-1364-H-02



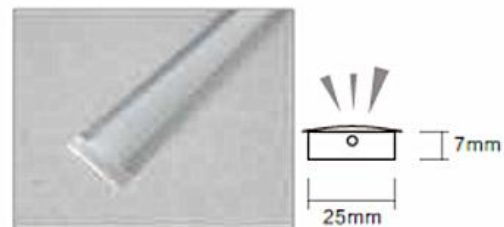
● WST-1364-C-01



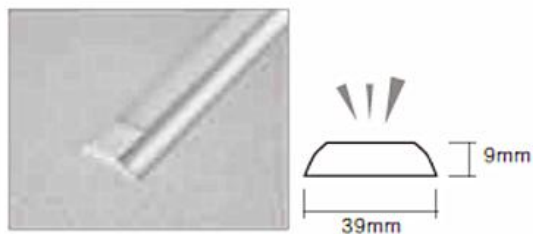
● WST-1364-C-03



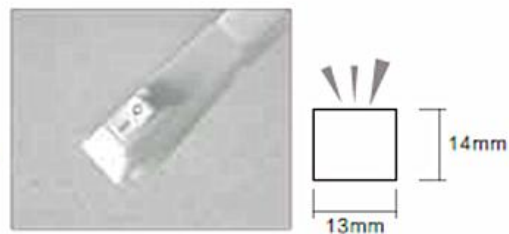
● WST-1364-C-02



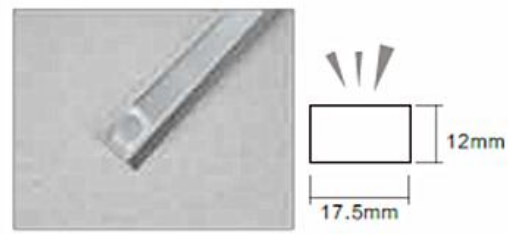
● WST-1364-C1



● WST-1364-J



● WST-1364-SQB



● WST-1364-C-B

If any product can meet your requirement,
please contact **Lisheng Tan** for further information.

Foshan Weistai Electric Co., Ltd

Add: No.39 Changbao West Road, Rongli Industrial Zone, Ronggui Town,
Shunde Area, Foshan City, Guangdong Province, China

Email: tan@weistai.com lisheng-tan@163.com

Tel: 0086 757 28989169

Fax: 0086 757 28994783

Mob/What's app: 0086 13702430312

Skype: lisheng tan

<http://www.weistai.com>

