



=RUSSIAN engineered woodworking lumber as finished product items or sets of wooden structures !!

:Commercial Letter of Intent/Business Proposal Letter of year 2017-2018 @modern civil wooden housing construction kits' commercial retail distribution * as been made of the precisely pre-fabricated Glulam Timber & Cylinder Whole-wooden Log Units' structural material : produced by our leading competitive domestic certified executive manufacturers & customized branded design engineers (complete design-projects & finished production of the Woodworking Industry of the Russian Federation):

::Please see freely our fair & official producers' seasonal trade catalogues of ready & new architect design models of the cottage-type wooden houses in processed timber or log units (**engineered project lists & maps of design models**) as for the specific engineering & commercial details & to make order @your developer's & contractor's requested construction block-site destination worldwide !!

Precise Engineered Lumber Woodworks @ Original Structural Softwoods of Russia :: as from project designing upto executive manufacturing & to commercial shipment order (original glue-lam timber & cylinder log pre-fab housing sets' distribution & supply)

Точная Инженерная ДЕРЕВОобработка Пиломатериалов в Оригинальных Конструкционных Хвойных Породках России :: как от разработки проекта до исполнительного производства и заказа коммерческой отгрузки (дистрибуция и сбыт сборных домокомплектов из оригинального клееного бруса и оцилиндрованного бревна)

*****Basic Conditions of Production & Trade of CYLINDER LOG HOMES & LOG BATH-HOUSES (PREFABRICATED HOUSING KITS) by Pallada Eco Blockhaus GmbH, Moscow Russia, Mr.Svyat Sytin +7(926)444-4862 or e-mail svyatoslav.sytin@yandex.ru**

*****retail price of \$200 per CUB.MTR of 160-180-220-240-260-280-300mm in pine/spruce lumber available of wall prefab set**

*****MiNIMUM shipment volume in single 40ft FCL/full container load per 42 CUB.MTR of order or more when in case of retail/bulk trade**

Commercial Formula of a complete product unit value determination (of a complete prefab house kit –with strengthened structures of roof & floor & with joinery woodworks//of a zero prefab house kit –without strengthened structures & without joinery woodworks) = net price for a section size of the cylinder log of wall prefab house set of 160-180-220-240-260-280mm upto 300mm + adding price for strengthened set of roof & floor structures, also cost of joinery woodworks) !!

Web-link to commercial distributor's production site of Pallada Eco Blockhaus GmbH, Moscow

Russia::www.palladaeco.com/doma-iz-brevna & www.palladaeco.com/bani

((http://www.facebook.com/groups/1939149883079040/))

Design-project executive models (current factory/warehouse samples) by 160/180/220/240/260/280/300 mm of wall set's CYLINDER NATURAL MOISTURE MASSIVE (not glulam) ROUND LOG thickness specification::

PLEASE NOTE THAT::Seacargo 40ft FCL/full container load is not likely to be shipped to far continents of Americas/Africa/Asia because of **LOG Natural Moisture storage risk** – instead eurocar is to be delivered to convenient Europe port !!

Typical machine-cut round log homes (prefab housing kits of wall constructions & strengthened structures of roof/floor/joinery units) in vast variety by seasonal distributive catalog of year 2018 @trading retail capacity of the company Pallada Eco Blockhaus GmbH, Moscow Russia, which we are always ready to perform to Buyer !!

Original Structural SoftWood Lumber of Russia @ Precise Engineered Woodworks by technically specified industrial efforts of Russian National Lumber Company's executive domestic production & international supply shipment maintenance of retail competitive trading in Pre-fabricated Wooden Housing Sets made from Glue-laminated Constructional Profiled Timber or Cylinder-processed Log assemblage units (as concerning any adopted engineered design-project of wooden structures' production for house kit assemblage @ order's destination) !!

****Dear client & customer of wooden prefabricated housing structures, please notice our present business proposal of offering to you directly the original certified Russian Manufacturing capacity of all types Cylinder Log & Glue-laminated Timber (or even DRY massive timber @ cheaper cost) of Walls Set Completion in a Wooden Houses' Prefab Kits Design-Project (shipment sets of construction materials) & RUN.MTR semi-fabricated sawn LUMBER (dry & natural-moisture board, or even DÉCOR MOLDING/TRIM run.MTR S4S (surfaced 4-side) dry planed facing lumber-board :: as a complete industrial production made from best technical northern softwood species of Russia (pine, spruce, larch, cedar) affordable instantly @ lower retail prices worldwide. Ready-made design project models of different architect types' wooden houses are to be shipped at your order destination in duly-packed transportation sets of housing structural materials (as by standard sea-cargo 40ft container load) per a regular commercial contract on the prepayment/advance settlement basis by Buyer as directly been sent & received from Russia only. **Please contact us anytime by e-mailing request to (svyatoslav.sytin@yandex.ru) or calling directly Moscow, Russia +7926-444-4862 (English only) to determine all your retail consumer's needs & to see through our varied design project catalogs of the wooden house models.**

WOODEN HOUSING STRUCTURES (PRE-FABRICATED SETS OF TIMBER or LOG BUILDING UNITS) from RUSSIA (export)

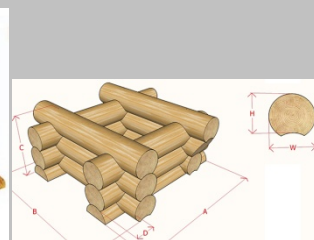
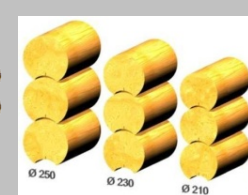
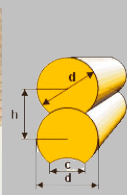
ENJOY LONG LIVING with HOUSES OF WOOD from RUSSIA in timber & log building !!

*****Cylinder-shaped natural-moisture Log house (**as full shipment set of wall structural units including roof & floor & joinery woodworks' elements if necessary by a customized order details)**

*****Cylinder log (round lumber) house \$200/€170 per cub.mtr vol. of structural unit/wall set (=Sweden-style Cylinder Log structural units' sets of natural moisture specification)**

*****No included VAT/value added taxation @clear international price distribution per direct Buyer's contract for only confirmed & registered organizations/corporations/enterprises (non-individuals) ^^WE CUT 18%VAT off export price for NR (non-resident) contracts**

*****Factory/warehouse FCA/free-carrier shipment by standard 20/40/45 feet FCL/full container load for sea-cargo or euro-truck CARNET TIR/transport international roads +CMR waybill/convention of merchandises per route for a basic commercial compound composition set of the wooden housing structures (delivered by sea cargo or land vehicle worldwide)**



+7-926-444-4862 please call (or send SMS anytime) to Mr.Svyat Sytin @working hours GMT (07.30am-20.30pm) OR kindly write directly your e-mail request for all urgent business connections & any commercial proposal's response to Svyatoslav.Sytin@yandex.ru | :Not likely to be distributed or re-distributed commercially @ any social media or entrepreneurship web-works ever principally with all possible sequential business obligations to a final customer or a retail consumer worldwide * within any corresponding honest & respectable business negotiations to the housing engineering developers or the site building contractors of the advertized regions of the globe:: =Confidential & Personal Advertizing Information for our Private Clientele worldwide & for customized retail sales' distributive management only=

Structural housing softwoods lumber industrial design of Russia

::(промышленный дизайн конструкционных пиломатериалов домостроения хвойных пород древесины России)::

^^WE CUT 18%VAT off export price for NR (non-resident) contracts (as by non-individual corp/comp/enterp ONLY)



=RUSSIAN engineered woodworking lumber as finished product items or sets of wooden structures !!

:Commercial Letter of Intent/Business Proposal Letter of year 2017-2018 @modern civil wooden housing construction kits' commercial retail distribution * as been made of the precisely pre-fabricated Glulam Timber & Cylinder Whole-wooden Log Units' structural material : produced by our leading competitive domestic certified executive manufacturers & customized branded design engineers (complete design-projects & finished production of the Woodworking Industry of the Russian Federation):

::Please see freely our fair & official producers' seasonal trade catalogues of ready & new architect design models of the cottage-type wooden houses in processed timber or log units (**engineered project lists & maps of design models**) as for the specific engineering & commercial details & to make order @your developer's & contractor's requested construction block-site destination worldwide !!

Precise Engineered Lumber Woodworks @ Original Structural Softwoods of Russia :: as from project designing upto executive manufacturing & to commercial shipment order (original glue-lam timber & cylinder log pre-fab housing sets' distribution & supply)

Точная Инженерная Деревообработка Пиломатериалов в Оригинальных Конструкционных Хвойных Породах России :: как от разработки проекта до исполнительного производства и заказа коммерческой отгрузки (дистрибуция и сбыт сборных домокомплектов из оригинального клееного бруса и оцилиндрованного бревна)

***Basic Conditions of Production & Trade of **SMALL GARDEN CABINS & BATH-HOUSES OF PROFILED DRY TIMBER (PREFABRICATED HOUSING KITS)** by **Pallada Eco Blockhaus**

GmbH, Moscow Russia, Mr.Svyat Sytin +7(926)444-4862 or e-mail svyatoslav.sytin@yandex.ru

***retail price **offered per DESING PROJECT** of 28-45-70mm in pine/spruce lumber available

*****MINIMUM** shipment volume in single 40ft FCL/full container load per 42 CUB.MTR of order or more when in case of retail/bulk trade

Commercial Formula of a complete product unit value determination (of a complete prefab house kit -with strengthened structures of roof & floor & with joinery woodworks//of a zero prefab house kit -without strengthened structures & without joinery woodworks) = **net price for a section size of the profiled dry timber of wall prefab house set of 28mm & 45mm or 70mm** + adding price for strengthened set of roof & floor structures, also cost of joinery woodworks) !!

Web-link to commercial distributor's production site of Pallada Eco Blockhaus GmbH, Moscow

Russia::www.palladaeco.com/sadovye-domiki ((http://www.facebook.com/groups/1939149883079040/))

Design-project executive models (current factory/warehouse samples) by 28/45/**70** mm of wall set's **PROFILED DRY MASSIVE (not glulam) TIMBER** thickness specification::

Typical garden cabins (**prefab housing kits of wall constructions** & strengthened structures of roof/floor/joinery units) in vast variety by seasonal distributive catalog of year 2018 @trading retail capacity of the company **Pallada Eco Blockhaus GmbH, Moscow Russia, which we are always ready to perform to Buyer !!**

Original Structural SoftWood Lumber of Russia @ Precise Engineered Woodworks by technically specified industrial efforts of Russian National Lumber Company's executive domestic production & international supply shipment maintenance of retail competitive trading in **Pre-fabricated Wooden Housing Sets made from Glue-laminated Constructional Profiled Timber or Cylinder-processed Log assemblage units (as concerning any adopted engineered design-project of wooden structures' production for house kit assemblage @ order's destination) !!**

****Dear client & customer of wooden prefabricated housing structures, please notice our present business proposal of offering to you directly the original certified Russian Manufacturing capacity of all types Cylinder Log & Glue-laminated Timber (or even DRY massive timber @ cheaper cost) of Walls Set Completion in a Wooden Houses' Prefab Kits Design-Project (shipment sets of construction materials) & RUN.MTR semi-fabricated sawn LUMBER (dry & natural-moisture board) or even DÉCOR MOLDING/TRIM run mtr S4S (surfaced 4-side) dry planed facing lumber-board :: as a complete industrial production made from best technical northern softwood species of Russia (pine, spruce, larch, cedar) affordable instantly @ lower retail prices worldwide. Ready-made design project models of different architect types' wooden houses are to be shipped at your order destination in duly-packed transportation sets of housing structural materials (as by standard sea-cargo 40ft container load) per a regular commercial contract on the prepayment/advance settlement basis by Buyer as directly been sent & received from Russia only. **Please contact us anytime by e-mailing request to (svyatoslav.sytin@yandex.ru) or calling directly Moscow, Russia +7926-444-4862 (English only) to determine all your retail consumer's needs & to see through our varied design project catalogs of the wooden house models.**

WOODEN HOUSING STRUCTURES (PRE-FABRICATED SETS OF TIMBER or LOG BUILDING UNITS) from RUSSIA (export)

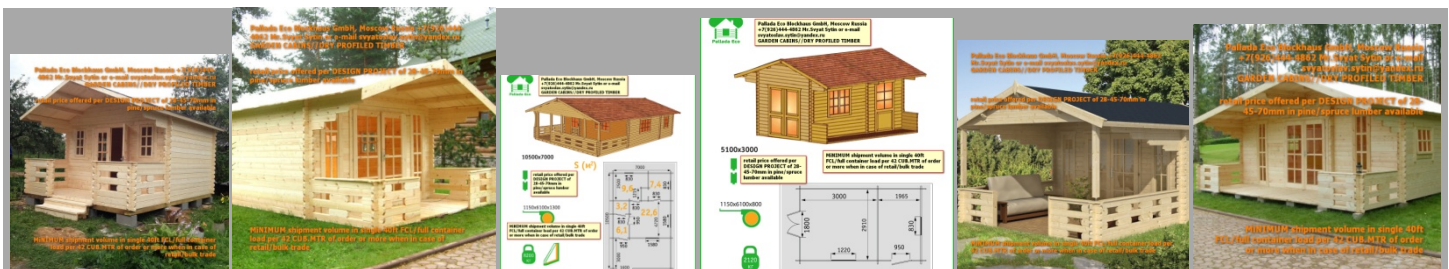
ENJOY LONG LIVING WITH HOUSES OF WOOD from RUSSIA in timber & log building !!

***Small garden Timber OR Log structures' cabins & bath-houses of different purpose in use (**as full shipment set of wall structural units including roof & floor & joinery woodworks' elements if necessary by a customized order details)

***small outdoor Cabins OR timber/log bath-houses (separately & exclusively or in a basic house set) (=Complete Door-case exterior & inter-room installation set-units @basic house set OR exclusive models' quality execution)

***No included VAT/value added taxation @clear international price distribution per direct Buyer's contract for only confirmed & registered organizations/corporations/enterprises (non-individuals) ^^WE CUT 18%VAT off export price for NR (non-resident) contracts

***Factory/warehouse FCA/free-carrier shipment by standard 20/40/45 feet FCL/full container load for sea-cargo or euro-truck CARNET TIR/transport international roads +CMR waybill/convention of merchandises per route for a basic commercial compound composition set of the wooden housing structures (delivered by sea cargo or land vehicle worldwide)



=ASK FOR DESIGN MODELS FIRST BUT NOT PRICE (**price is a private calculation task) !!

+7-926-444-4862 please call (or send SMS anytime) to Mr.Svyat Sytin @working hours GMT (07.30am-20.30pm) OR kindly write directly your e-mail request for all urgent business connections & any commercial proposal's response to Svyatoslav.Sytin@yandex.ru | :Not likely to be distributed or re-distributed commercially @ any social media or entrepreneurship web-works ever principally with all possible sequential business obligations to a final customer or a retail consumer worldwide * within any corresponding honest & respectable business negotiations to the housing engineering developers or the site building contractors of the advertized regions of the globe:: =Confidential & Personal Advertizing Information for our Private Clientele worldwide & for customized retail sales' distributive management only=

Structural housing softwoods lumber industrial design of Russia

::(промышленный дизайн конструкционных пиломатериалов домостроения хвойных пород древесины России)::

^^WE CUT 18%VAT off export price for NR (non-resident) contracts (as by non-individual corp/comp/enterp ONLY)





=RUSSIAN engineered woodworking lumber as finished product items or sets of wooden structures !!

:Commercial Letter of Intent/Business Proposal Letter of year 2017-2018 @modern civil wooden housing construction kits' commercial retail distribution * as been made of the precisely pre-fabricated Glulam Timber & Cylinder Whole-wooden Log Units' structural material : produced by our leading competitive domestic certified executive manufacturers & customized branded design engineers (complete design-projects & finished production of the Woodworking Industry of the Russian Federation):

::Please see freely our fair & official producers' seasonal trade catalogues of ready & new architect design models of the cottage-type wooden houses in processed timber or log units (**engineered project lists & maps of design models**) as for the specific engineering & commercial details & to make order @your developer's & contractor's requested construction block-site destination worldwide !!

Precise Engineered Lumber Woodworks @ Original Structural Softwoods of Russia :: as from project designing upto executive manufacturing & to commercial shipment order (original glue-lam timber & cylinder log pre-fab housing sets' distribution & supply)

Точная Инженерная Деревообработка Пиломатериалов в Оригинальных Конструкционных Хвойных Породах России :: как от разработки проекта до исполнительного производства и заказа коммерческой отгрузки (дистрибуция и сбыт сборных домокомплектов из оригинального клееного бруса и оцилиндрованного бревна)

***Basic Conditions of Production & Trade of **GLULAM TIMBER HOMES & TIMBER BATH-HOUSES (PREFABRICATED HOUSING KITS)** by **Pallada Eco Blockhaus GmbH, Moscow**

Russia, Mr.Svyat Sytin +7(926)444-4862 or e-mail svyatoslav.sytin@yandex.ru

***retail price of **\$460 per CUB.MTR** of height 140-160-180-240mm by width 80-120-160-200-240mm in pine/spruce lumber available of wall prefab set

***MiNIMUM shipment volume in single 40ft FCL/full container load per 42 CUB.MTR of order or more when in case of retail/bulk trade

Commercial Formula of a complete product unit value determination (of a complete prefab house kit -with strengthened structures of roof & floor & with joinery woodworks//of a zero prefab house kit -without strengthened structures & without joinery woodworks) = **net price for a section size of the glulam (glue-laminated) profiled timber of wall prefab house set of height 140-160-180-240mm by width 80-120-160-200-240mm** + adding price for strengthened set of roof & floor structures, also cost of joinery woodworks) !!

Web-link to commercial distributor's production site of Pallada Eco Blockhaus GmbH, Moscow

Russia::www.palladaeco.com/kleenaya-produktsiya ((http://www.facebook.com/groups/1939149883079040/))

Design-project executive models (current factory/warehouse samples) by height of 140/160/180/240 mm to width of 80/120/160/200/240 mm of wall set's **PROFILED GLULAM TIMBER** thickness specification::

Typical machine-cut profiled glulam timber homes (prefab housing kits of wall constructions & strengthened structures of roof/floor/joinery units) in vast variety by seasonal distributive catalog of year 2018 @trading retail capacity of the company **Pallada Eco Blockhaus GmbH, Moscow Russia**, which we are always ready to perform to Buyer !!

Original Structural SoftWood Lumber of Russia @ Precise Engineered Woodworks by technically specified industrial efforts of Russian National Lumber Company's executive domestic production & international supply shipment maintenance of retail competitive trading in Pre-fabricated Wooden Housing Sets made from Glue-laminated Constructional Profiled Timber or Cylinder-processed Log assemblage units (as concerning any adopted engineered design-project of wooden structures' production for house kit assemblage @ order's destination) !!

****Dear client & customer of wooden prefabricated housing structures, please notice our present business proposal of offering to you directly the original certified Russian Manufacturing capacity of all types Cylinder Log & Glue-laminated Timber (or even DRY massive timber @ cheaper cost) of Walls Set Completion in a Wooden Houses' Prefab Kits Design-Project (shipment sets of construction materials) & RUN.MTR semi-fabricated sawn LUMBER (dry & natural-moisture board) or even DÉCOR MOLDING/TRIM run.mtr \$4S (surfaced 4-side) dry planed facing lumber-board :: as a complete industrial production made from best technical northern softwood species of Russia (pine, spruce, larch, cedar) affordable instantly @ lower retail prices worldwide. Ready-made design project models of different architect types' wooden houses are to be shipped at your order destination in duly-packed transportation sets of housing structural materials (as by standard sea-cargo 40ft container load) per a regular commercial contract on the prepayment/advance settlement basis by Buyer as directly been sent & received from Russia only. **Please contact us anytime by e-mailing request to (svyatoslav.sytin@yandex.ru) or calling directly Moscow, Russia +7926-444-4862 (English only) to determine all your retail consumer's needs & to see through our varied design project catalogs of the wooden house models.**

WOODEN HOUSING STRUCTURES (PRE-FABRICATED SETS OF TIMBER or LOG BUILDING UNITS) from RUSSIA (export)

ENJOY LONG LIVING WITH HOUSES OF WOOD from RUSSIA in timber & log building !!

Profiled Glulam Timber Single-Wall structures' house (**as full shipment set of wall structural units including roof & floor & joinery woodworks' elements if necessary by a customized order details)//Framework planed Glulam Beam board's house (**

***Glulam profiled timber (beam) house kit \$460/€390 per cub.mtr vol. of structural unit/wall set (=Finland-style profiled glulam Timber structural units sets)//(=Strengthened planed glulam Beam \$500/€430 per cub.mtr vol. of structural unit's set)

***No included VAT/value added taxation @clear international price distribution per direct Buyer's contract for only confirmed & registered organizations/corporations/enterprises (non-individuals) ^^WE CUT 18%VAT off export price for NR (non-resident) contracts

***Factory/warehouse FCA/free-carrier shipment by standard 20/40/45 feet FCL/full container load for sea-cargo or euro-truck CARNET TIR/transport delivered by sea +CMR waybill/convention of merchandises per route for a basic commercial compound composition set of the wooden housing structures (delivered by sea cargo or land vehicle worldwide)



+7-926-444-4862 please call (or send SMS anytime) to Mr.Svyat Sytin @working hours GMT (07.30am-20.30pm) OR kindly write directly your e-mail request for all urgent business connections & any commercial proposal's response to Svyatoslav.Sytin@yandex.ru | :Not likely to be distributed or re-distributed commercially @ any social media or entrepreneurship web-works ever principally with all possible sequential business obligations to a final customer or a retail consumer worldwide * within any corresponding honest & respectable business negotiations to the housing engineering developers or the site building contractors of the advertized regions of the globe:: =Confidential & Personal Advertizing Information for our Private Clientele worldwide & for customized retail sales' distributive management only=

Structural housing softwoods lumber industrial design of Russia

::(промышленный дизайн конструкционных пиломатериалов домостроения хвойных пород древесины России)::

^^WE CUT 18%VAT off export price for NR (non-resident) contracts (as by non-individual corp/comp/enterp ONLY)